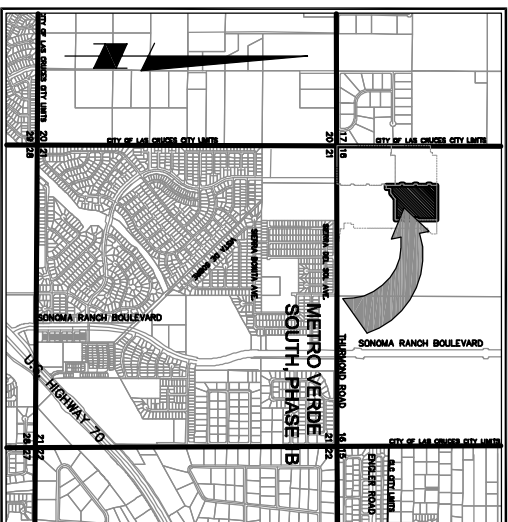


METRO VERDE SOUTH, PHASE 1B

LOCATED IN THE SW 1/4 OF SECTION 16, T.22S., R.2E., N.M.P.M.,
CITY OF LAS CRUCES, DONA ANA COUNTY, NEW MEXICO

SCALE: 1"=60' NOVEMBER 19, 2011



VICINITY MAP

NOT TO SCALE

DEDICATION
THE TRACT OF LAND HERON IS TO BE KNOWN AS METRO VERDE SOUTH, PHASE 1B AND THE OWNERS HAVE SET THEIR HAND AND SEALS THIS _____ DAY OF _____ 20___

ALL RIGHTS-IF ANY SHOWN HERON FOR STREETS ARE REDUCED TO THE CITY OF LAS CRUCES. ALL RIGHTS-IF ANY SHOWN HERON FOR UTILITIES ARE REDUCED TO THE CITY OF LAS CRUCES. ALL RIGHTS-IF ANY SHOWN HERON FOR CABLE TV ARE REDUCED TO THE CITY OF LAS CRUCES. ALL RIGHTS-IF ANY SHOWN HERON FOR GAS ARE REDUCED TO THE CITY OF LAS CRUCES. ALL RIGHTS-IF ANY SHOWN HERON FOR WATER ARE REDUCED TO THE CITY OF LAS CRUCES. ALL RIGHTS-IF ANY SHOWN HERON FOR TELEPHONE ARE REDUCED TO THE CITY OF LAS CRUCES. ALL RIGHTS-IF ANY SHOWN HERON FOR POWER ARE REDUCED TO THE CITY OF LAS CRUCES. ALL RIGHTS-IF ANY SHOWN HERON FOR TELEVISION ARE REDUCED TO THE CITY OF LAS CRUCES. ALL RIGHTS-IF ANY SHOWN HERON FOR CABLE TV ARE REDUCED TO THE CITY OF LAS CRUCES. ALL RIGHTS-IF ANY SHOWN HERON FOR GAS ARE REDUCED TO THE CITY OF LAS CRUCES. ALL RIGHTS-IF ANY SHOWN HERON FOR WATER ARE REDUCED TO THE CITY OF LAS CRUCES. ALL RIGHTS-IF ANY SHOWN HERON FOR TELEPHONE ARE REDUCED TO THE CITY OF LAS CRUCES. ALL RIGHTS-IF ANY SHOWN HERON FOR POWER ARE REDUCED TO THE CITY OF LAS CRUCES.

THE SUBDIVISION HAS BEEN DEDICATED IN ACCORDANCE WITH THE WISHES OF THE UNDERSIGNED OWNERS(S) OF THE LAND SHOWN HERON. IN WITNESS WHEREOF SAID OWNERS HAVE SET THEIR HAND AND SEALS THIS _____ DAY OF _____ 20___

SIERRA NORTE DEVELOPMENT, INC.
5550 W. HUNTER AVENUE
LAS CRUCES, NEW MEXICO 88607

INSTITUTION OF PROFESSIONAL ENGINEERS AND SURVEYORS
STATE OF NEW MEXICO
COUNTY OF DONA ANA
DATE: NOVEMBER 17, 2011

ACKNOWLEDGMENT
STATE OF NEW MEXICO
COUNTY OF DONA ANA
THE FOREGOING INSTRUMENT WAS ACKNOWLEDGED BEFORE ME THIS _____ DAY OF _____ 20___ BY _____

ON BEHALF OF SIERRA NORTE DEVELOPMENT, INC.
NOTARY PUBLIC
DONA ANA COUNTY CLERK
RECEPTION NO. _____
STATE OF NEW MEXICO
COUNTY OF DONA ANA

I HEREBY CERTIFY THAT THIS INSTRUMENT WAS FILED FOR RECORD ON THIS _____ DAY OF _____ 20___ AT _____ O'CLOCK
M AND D ONLY RECORDED IN PLAT RECORD _____
PAGE(S) _____ IN THE RECORDS OF THE DONA ANA COUNTY CLERK.
BY: _____ DATE: _____
BY: DONA ANA COUNTY CLERK
BY: DONA ANA COUNTY DEPUTY CLERK

SHEET INDEX
EDUCATION SHEET 1 OF 2
PLAT SHEET 2 OF 2

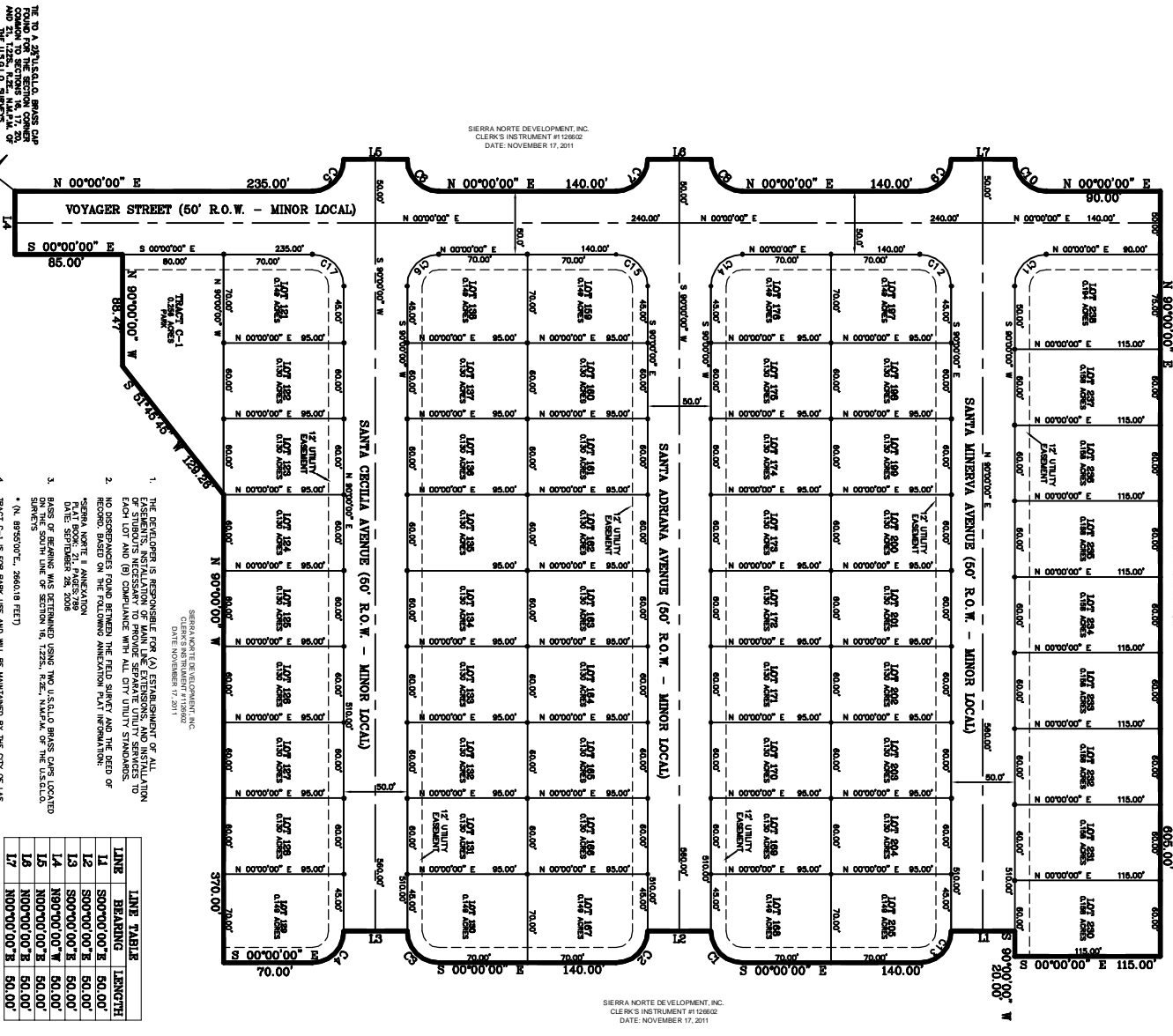
DEDICATION APPROVALS
THIS PLAT HAS BEEN APPROVED FOR ESSENTIAL PURPOSES ONLY, THE BONDING OF THIS PLAT DOES NOT IN ANY WAY GUARANTEE UTILITY SERVICE BY THE UNDERSIGNED COMPANIES TO THE SUBDIVISION.
UTILITY APPROVALS
ESSENTIALS SHOWN HERON, COPIES OF WHICH HAVE BEEN PRESENTED TO _____ DATE: _____
PLANS ELECTRIC COMPANY
ESSENTIALS SHOWN HERON, COPIES OF WHICH HAVE BEEN PRESENTED TO _____ DATE: _____
CABLE COMMUNICATIONS INC.
ESSENTIALS SHOWN HERON, COPIES OF WHICH HAVE BEEN PRESENTED TO _____ DATE: _____
QUEST COMMUNICATIONS, INC.
ESSENTIALS SHOWN HERON, COPIES OF WHICH HAVE BEEN PRESENTED TO _____ DATE: _____

DIAMONDBACK
LAND SURVEYING CO., INC.
4088 MISSION BELL AVENUE
LAS CRUCES, NM 88011
FILE NO. 110893

METRO VERDE SOUTH, PHASE 1B

LOCATED IN THE SW 1/4 OF SECTION 16, T.22S., R.2E., N.M.P.M.,
CITY OF LAS CRUCES, DONA ANA COUNTY, NEW MEXICO

SCALE: 1"=60' NOVEMBER 19, 2011



CHURVE TABLE

CHURVE	RADIUS	LENGTH	CHORD	BEARING	DETAIL
C1	25.00'	58.27'	55.38'	S 84°57'00" E	S 80°00'00"
C2	25.00'	58.27'	55.38'	S 84°57'00" E	S 80°00'00"
C3	25.00'	58.27'	55.38'	S 84°57'00" E	S 80°00'00"
C4	25.00'	58.27'	55.38'	S 84°57'00" E	S 80°00'00"
C5	25.00'	58.27'	55.38'	S 84°57'00" E	S 80°00'00"
C6	25.00'	58.27'	55.38'	S 84°57'00" E	S 80°00'00"
C7	25.00'	58.27'	55.38'	S 84°57'00" E	S 80°00'00"
C8	25.00'	58.27'	55.38'	S 84°57'00" E	S 80°00'00"
C9	25.00'	58.27'	55.38'	S 84°57'00" E	S 80°00'00"
C10	25.00'	58.27'	55.38'	S 84°57'00" E	S 80°00'00"
C11	25.00'	58.27'	55.38'	S 84°57'00" E	S 80°00'00"
C12	25.00'	58.27'	55.38'	S 84°57'00" E	S 80°00'00"
C13	25.00'	58.27'	55.38'	S 84°57'00" E	S 80°00'00"
C14	25.00'	58.27'	55.38'	S 84°57'00" E	S 80°00'00"
C15	25.00'	58.27'	55.38'	S 84°57'00" E	S 80°00'00"
C16	25.00'	58.27'	55.38'	S 84°57'00" E	S 80°00'00"
C17	25.00'	58.27'	55.38'	S 84°57'00" E	S 80°00'00"
C18	25.00'	58.27'	55.38'	S 84°57'00" E	S 80°00'00"
C19	25.00'	58.27'	55.38'	S 84°57'00" E	S 80°00'00"
C20	25.00'	58.27'	55.38'	S 84°57'00" E	S 80°00'00"
C21	25.00'	58.27'	55.38'	S 84°57'00" E	S 80°00'00"
C22	25.00'	58.27'	55.38'	S 84°57'00" E	S 80°00'00"
C23	25.00'	58.27'	55.38'	S 84°57'00" E	S 80°00'00"
C24	25.00'	58.27'	55.38'	S 84°57'00" E	S 80°00'00"
C25	25.00'	58.27'	55.38'	S 84°57'00" E	S 80°00'00"
C26	25.00'	58.27'	55.38'	S 84°57'00" E	S 80°00'00"
C27	25.00'	58.27'	55.38'	S 84°57'00" E	S 80°00'00"
C28	25.00'	58.27'	55.38'	S 84°57'00" E	S 80°00'00"
C29	25.00'	58.27'	55.38'	S 84°57'00" E	S 80°00'00"
C30	25.00'	58.27'	55.38'	S 84°57'00" E	S 80°00'00"
C31	25.00'	58.27'	55.38'	S 84°57'00" E	S 80°00'00"
C32	25.00'	58.27'	55.38'	S 84°57'00" E	S 80°00'00"
C33	25.00'	58.27'	55.38'	S 84°57'00" E	S 80°00'00"
C34	25.00'	58.27'	55.38'	S 84°57'00" E	S 80°00'00"
C35	25.00'	58.27'	55.38'	S 84°57'00" E	S 80°00'00"
C36	25.00'	58.27'	55.38'	S 84°57'00" E	S 80°00'00"
C37	25.00'	58.27'	55.38'	S 84°57'00" E	S 80°00'00"
C38	25.00'	58.27'	55.38'	S 84°57'00" E	S 80°00'00"
C39	25.00'	58.27'	55.38'	S 84°57'00" E	S 80°00'00"
C40	25.00'	58.27'	55.38'	S 84°57'00" E	S 80°00'00"
C41	25.00'	58.27'	55.38'	S 84°57'00" E	S 80°00'00"
C42	25.00'	58.27'	55.38'	S 84°57'00" E	S 80°00'00"
C43	25.00'	58.27'	55.38'	S 84°57'00" E	S 80°00'00"
C44	25.00'	58.27'	55.38'	S 84°57'00" E	S 80°00'00"
C45	25.00'	58.27'	55.38'	S 84°57'00" E	S 80°00'00"
C46	25.00'	58.27'	55.38'	S 84°57'00" E	S 80°00'00"
C47	25.00'	58.27'	55.38'	S 84°57'00" E	S 80°00'00"
C48	25.00'	58.27'	55.38'	S 84°57'00" E	S 80°00'00"
C49	25.00'	58.27'	55.38'	S 84°57'00" E	S 80°00'00"
C50	25.00'	58.27'	55.38'	S 84°57'00" E	S 80°00'00"
C51	25.00'	58.27'	55.38'	S 84°57'00" E	S 80°00'00"
C52	25.00'	58.27'	55.38'	S 84°57'00" E	S 80°00'00"
C53	25.00'	58.27'	55.38'	S 84°57'00" E	S 80°00'00"
C54	25.00'	58.27'	55.38'	S 84°57'00" E	S 80°00'00"
C55	25.00'	58.27'	55.38'	S 84°57'00" E	S 80°00'00"
C56	25.00'	58.27'	55.38'	S 84°57'00" E	S 80°00'00"
C57	25.00'	58.27'	55.38'	S 84°57'00" E	S 80°00'00"
C58	25.00'	58.27'	55.38'	S 84°57'00" E	S 80°00'00"
C59	25.00'	58.27'	55.38'	S 84°57'00" E	S 80°00'00"
C60	25.00'	58.27'	55.38'	S 84°57'00" E	S 80°00'00"
C61	25.00'	58.27'	55.38'	S 84°57'00" E	S 80°00'00"
C62	25.00'	58.27'	55.38'	S 84°57'00" E	S 80°00'00"
C63	25.00'	58.27'	55.38'	S 84°57'00" E	S 80°00'00"
C64	25.00'	58.27'	55.38'	S 84°57'00" E	S 80°00'00"
C65	25.00'	58.27'	55.38'	S 84°57'00" E	S 80°00'00"
C66	25.00'	58.27'	55.38'	S 84°57'00" E	S 80°00'00"
C67	25.00'	58.27'	55.38'	S 84°57'00" E	S 80°00'00"
C68	25.00'	58.27'	55.38'	S 84°57'00" E	S 80°00'00"
C69	25.00'	58.27'	55.38'	S 84°57'00" E	S 80°00'00"
C70	25.00'	58.27'	55.38'	S 84°57'00" E	S 80°00'00"
C71	25.00'	58.27'	55.38'	S 84°57'00" E	S 80°00'00"
C72	25.00'	58.27'	55.38'	S 84°57'00" E	S 80°00'00"
C73	25.00'	58.27'	55.38'	S 84°57'00" E	S 80°00'00"
C74	25.00'	58.27'	55.38'	S 84°57'00" E	S 80°00'00"
C75	25.00'	58.27'	55.38'	S 84°57'00" E	S 80°00'00"
C76	25.00'	58.27'	55.38'	S 84°57'00" E	S 80°00'00"
C77	25.00'	58.27'	55.38'	S 84°57'00" E	S 80°00'00"
C78	25.00'	58.27'	55.38'	S 84°57'00" E	S 80°00'00"
C79	25.00'	58.27'	55.38'	S 84°57'00" E	S 80°00'00"
C80	25.00'	58.27'	55.38'	S 84°57'00" E	S 80°00'00"
C81	25.00'	58.27'	55.38'	S 84°57'00" E	S 80°00'00"
C82	25.00'	58.27'	55.38'	S 84°57'00" E	S 80°00'00"
C83	25.00'	58.27'	55.38'	S 84°57'00" E	S 80°00'00"
C84	25.00'	58.27'	55.38'	S 84°57'00" E	S 80°00'00"
C85	25.00'	58.27'	55.38'	S 84°57'00" E	S 80°00'00"
C86	25.00'	58.27'	55.38'	S 84°57'00" E	S 80°00'00"
C87	25.00'	58.27'	55.38'	S 84°57'00" E	S 80°00'00"
C88	25.00'	58.27'	55.38'	S 84°57'00" E	S 80°00'00"
C89	25.00'	58.27'	55.38'	S 84°57'00" E	S 80°00'00"
C90	25.00'	58.27'	55.38'	S 84°57'00" E	S 80°00'00"
C91	25.00'	58.27'	55.38'	S 84°57'00" E	S 80°00'00"
C92	25.00'	58.27'	55.38'	S 84°57'00" E	S 80°00'00"
C93	25.00'	58.27'	55.38'	S 84°57'00" E	S 80°00'00"
C94	25.00'	58.27'	55.38'	S 84°57'00" E	S 80°00'00"
C95	25.00'	58.27'	55.38'	S 84°57'00" E	S 80°00'00"
C96	25.00'	58.27'	55.38'	S 84°57'00" E	S 80°00'00"
C97	25.00'	58.27'	55.38'	S 84°57'00" E	S 80°00'00"
C98	25.00'	58.27'	55.38'	S 84°57'00" E	S 80°00'00"
C99	25.00'	58.27'	55.38'	S 84°57'00" E	S 80°00'00"
C100	25.00'	58.27'	55.38'	S 84°57'00" E	S 80°00'00"
C101	25.00'	58.27'	55.38'	S 84°57'00" E	S 80°00'00"
C102	25.00'	58.27'	55.38'	S 84°57'00" E	S 80°00'00"
C103	25.00'	58.27'	55.38'	S 84°57'00" E	S 80°00'00"
C104	25.00'	58.27'	55.38'	S 84°57'00" E	S 80°00'00"
C105	25.00'	58.27'	55.38'	S 84°57'00" E	S 80°00'00"
C106	25.00'	58.27'	55.38'	S 84°57'00" E	S 80°00'00"
C107	25.00'	58.27'	55.38'	S 84°57'00" E	S 80°00'00"
C108	25.00'	58.27'	55.38'	S 84°57'00" E	S 80°00'00"
C109	25.00'	58.27'	55.38'	S 84°57'00" E	S 80°00'00"
C110	25.00'	58.27'	55.38'	S 84°57'00" E	S 80°00'00"
C111	25.00'	58.27'	55.38'	S 84°57'00" E	S 80°00'00"
C112	25.00'	58.27'	55.38'	S 84°57'00" E	S 80°00'00"
C113	25.00'	58.27'	55.38'	S 84°57'00" E	S 80°00'00"
C114	25.00'	58.27'	55.38'	S 84°57'00" E	S 80°00'00"
C115	25.00'	58.27'	55.38'	S 84°57'00" E	S 80°00'00"
C116	25.00'	58.27'	55.38'	S 84°57'00" E	S 80°00'00"
C117	25.00'	58.27'	55.38'	S 84°57'00" E	S 80°00'00"
C118	25.00'	58.27'	55.38'	S 84°57'00" E	S 80°00'00"
C119	25.00'	58.27'	55.38'	S 84°57'00" E	S 80°00'00"
C120	25.00'	58.27'	55.38'	S 84°57'00" E	S 80°00'00"
C121	25.00'	58.27'	55.38'	S 84°57'00" E	S 80°00'00"
C122	25.00'	58.27'	55.38'	S 84°57'00" E	S 80°00'00"
C123	25.00'	58.27'	55.38'	S 84°57'00" E	S 80°00'00"
C124	25.00'	58.27'	55.38'	S 84°57'00" E	S 80°00'00"
C125	25.00'	58.27'	55.38'	S 84°57'00" E	S 80°00'00"
C126	25.00'	58.27'	55.38'	S 84°57'00" E	S 80°00'00"
C127	25.00'	58.27'	55.38'	S 84°57'00" E	S 80°00'00"
C128	25.00'	58.27'			